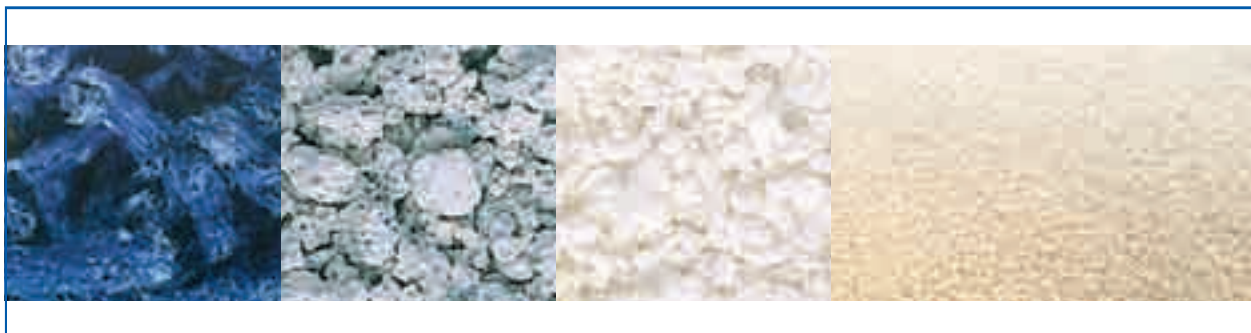
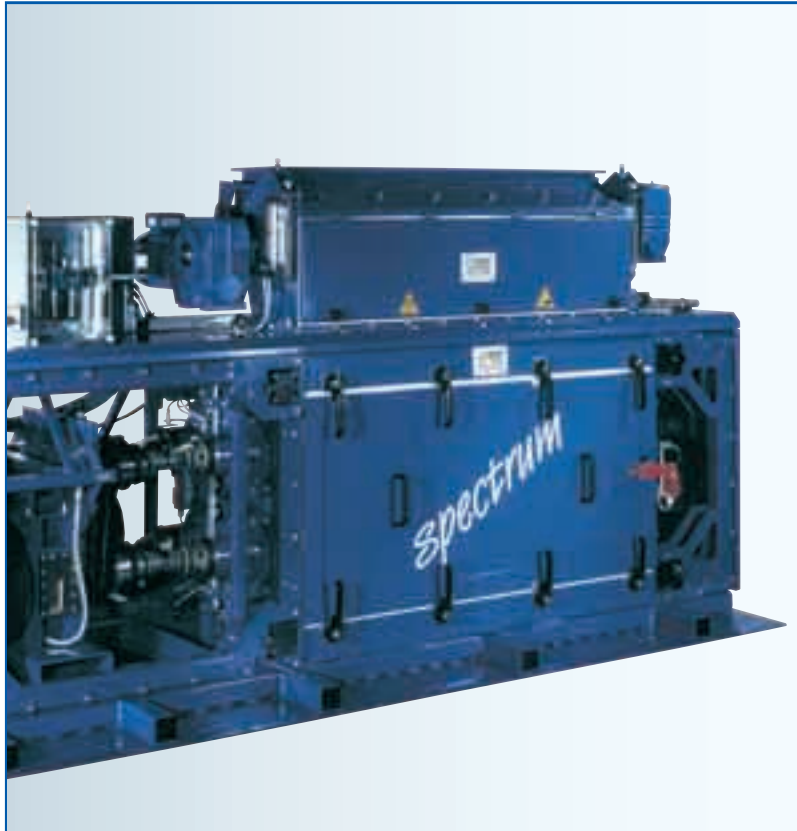


Grinders for the Chemical Industry

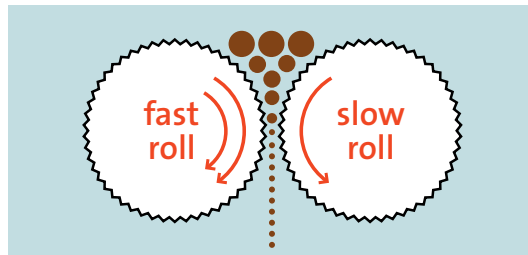
- Laboratory grinders
- Grinders for small or large capacities



Grinders of NEUHAUS NEOTEC

Grinder of low-dust crushing with narrow particle size distribution:

The NEUHAUS NEOTEC grinders permit crushing with narrow particle size distribution. The narrow particle size spectrum is achieved by means of a continuous compressive shear stress between two corrugated rolls and a defined roller gap.



Product examples:

NEUHAUS NEOTEC grinders crush soft, brittle as well as tenacious products:

- Maximum product hardness: 4 - 6 Mohs
- Achievable product fineness: up to 100 μm
- Narrow particle size distribution of the final product

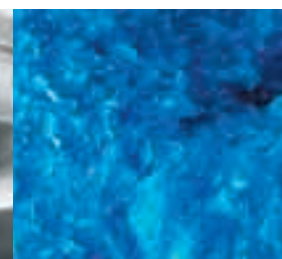
SAP	polymer
urea	potash
polyacrylate	phenolic plastics
calcium sulphate	ammonium nitrate
pectine	crushed tablets
ammonium bicarbonate	electronic waste

Laboratory grinder LWM 100

The laboratory grinder LWM 100 has been designed for crushing with a narrow particle size distribution.

Products with a hardness of up to 4 Mohs can be crushed to the required final product in a narrow preselectable particle size spectrum. The precise preselection of the particle size distribution leads to a minimum dust content.

The laboratory grinder LWM 100 is suitable for use in pilot plants or for small-scale production.



1. The grinder LWM 100 P is the production machine of the LWM series

Grinder WMS-C



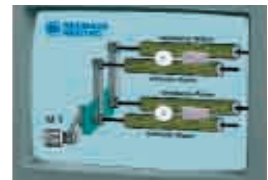
The grinders WMS-C have been designed especially for small capacities.

- One, two- or three stage, phased grinding
- Central drive for breaker and grinder section via twin timing belt
- Uniform particle size distribution
- Dust-tight design
- Sound insulation of the complete grinder

Grinders WMC

NEUHAUS NEOTECH chemical grinders are used for crushing with a narrow particle size distribution. Dust – and thus screening and reprocessing – are avoided if the WMC is used.

Unlike in case of traditional crushing methods, a purposeful crushing with a narrow particle size distribution is achieved with the WMC.



1. Servo adjustment of the grinding gap
2. Drive via cardan shafts
3. Roll bearing

Table of types and capacities

Type	Grinding stages	Roll length [mm]	Capacity* approx. (min./max.) {kg/h}
WMC	1 - 4 possible	700 - 1700	1000 - 5000
WMS-C	1 - 3 possible	200 - 400	200 - 1500
	1 - 2 possible	600	200 - 1500
LWM	1 - 2 possible	100	100 - 400

*Depending on product characteristics

NEUHAUS NEOTEC in the chemical industry



Broad-belt for the reception of bags. Product: glitter for metallic finish

NEUHAUS NEOTEC develops and manufactures machines and plants for the chemical industry.

Our pilot plant is available to customers and prospective buyers for tests with their products.

Due to our tailor-made solutions we are an internationally renowned partner: From the design, planning, and projecting via manufacture, assembly, commissioning up to maintenance and service – everything by one and the same company.



NEUHAUS NEOTEC Laboratory

- Product intake
- Grinding
- Laboratory equipment/quality management
 - Colortest for colorimetry of mainly dark products
 - Granutest for particle analysis of ground products, for example



Colortest



Cranutest for laboratories

