

# News



## Starting Signal in the Hamburg Harbour

The biggest European coffee terminal has been completed

## Grinders WMC

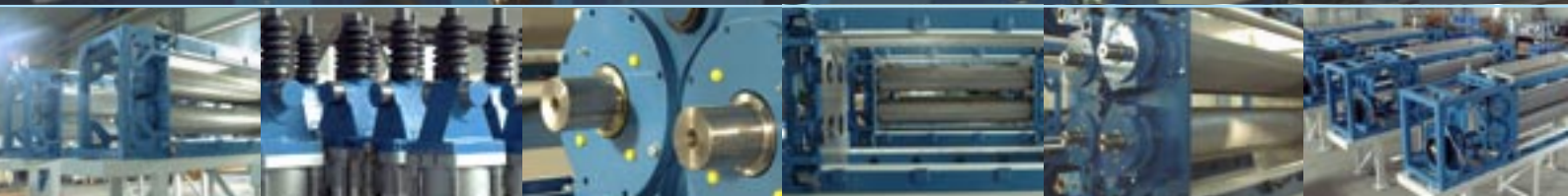
Final spurt before transport to the USA

## Tata Coffee Relies on RFB

Speciality roaster RFB-G provides the greatest variety

## The Secret of the Coffee Aroma

Tests at NEUHAUS NEOTEC produce new findings for modern roasting processes with traditional demands



# A STATE-OF-THE-ART GREEN COFFEE TERMINAL IS SET IN OPERATION



**NEUHAUS NEOTEC has built the biggest European coffee terminal in the Hamburg harbour**

In 1956, Helmut Papenhagen founded the coffee terminal in the Hamburg

harbour which was the most up-to-date plant in Europe then. About 50 years later, his son Heinz still runs the biggest and most up-to-date coffee terminal in Europe – and one of the biggest worldwide.

By the time the Neumann Group will have moved from the „Hafency“ to the „Hohe Schaarkamp“ in a few weeks' time, the silo storage capacities of his plant alone will have doubled from 15,000 tons to 30,000 tons.

Dimensions which are absolutely necessary. With 648,000 tons of green coffee Hamburg is the biggest European port of importation, the hub for coffee deliveries to Scandinavia and Eastern Europe. Besides, Hamburg is the domicile of the leading European coffee importers.



## „THE FLEXIBILITY OF THE RFB WILL HELP US TO EXTEND OUR MARKET LEADERSHIP“ NEUHAUS NEOTEC IN A DISCUSSION WITH INDUSTRIAS ALIADAS, COLUMBIA

**NN:** Which arguments were decisive for you to buy an RFB?

**IA:** Flexibility, New technology, Emission control system, Energy consumption, Color uniformity.

**NN:** Is the big flexibility going to be an advantage for you on the Colombian market?

**IA:** There are 5 Coffee companies in Columbia. No one has this type of equipment jet. IA will be the first and leading company. The new roaster will help IA with economical

change and with flexibility.

**NN:** How is the market situation in your country?

**IA:** The consumption of instant coffee in Colombia is steady. But the production of IA goes to 100 % into Export, mainly to the US, Japan and to Peru, Korea and Germany. IA is expecting increasing sales.

**NN:** What do you think which is your market percentage now and in future?

**IA:** IA is the 3 largest coffee

company in Colombia after FNCC and Col-Cafe.

**NN:** Could you tell us some production data as annual capacity, number of different blends, number of employees etc.?

**IA:** Production rate at the moment: 1800 to per year of soluble solids to be increased to 5000 to per year.

3 types of extract and 6 types of soluble coffee are produced at the moment with 92 employees. Number of employees to be increased to 125 soon.

**NN:** Please name us some future company targets.

**IA:** Establish Liquid coffee extract on the market.

*We thank Mr. Joaquin Segura for the interesting discussion.*



## PROSOL INVESTS IN A SECOND ROASTING PLANT

Prosol is a company dedicated to the production of soluble products for private labels.

Prosol is equipped with the latest technological developments in production and packaging of coffee

and with the best systems of quality control.

Prosol assures the customers of the best specific product in each sector. Recently they have invested in a second Neuhäus Neotec roasting line.

## LEADING DUTCH COFFEE ROASTER INVESTS IN NEUHAUS NEOTEC TECHNOLOGY

**An RFB roaster for the central factory in the Netherlands**

Drie Mollen (established in 1818 s'Hertogenbosch) is an internationally successfully operating and constantly expanding company engaged in the production and sale of coffee and tea.

Today Drie Mollen is one the leading coffee

roasters in Europe and is market leader in the private label sector. The company has operating units in the Netherlands, UK, France, Germany, Spain and Switzerland.

In their UK plant "Gala" in Dartford the company is roasting with NN RFB batch roaster since 1988. Now Drie Mollen has decided for a Neuhäus

Neotec RFB roasting line for their main roasting plant in the Netherlands.



# FIFTEEN NEW GRINDERS FOR THE USA

At the moment the new assembly hall at Neuhaus Neotec is filled with the machines of a large-scale order. Fifteen grinders, type WMC 152, have to be finished at the same time. A unique feature is the roller drive which is separated

from the rollers by a cardan shaft. The completely stainless-steel-lined grinding chamber ensures a minimization of adhesions. The WMS series of the Neuhaus Neotec grinders covers a capacity range of 200 to 1500 kg/h and the WMK series a range of 2000 to 5000 kg/h.



## NEUHAUS NEOTEC ENGINEERS STAND FOR HIGHEST PRECISION

The experienced milling engineer Michael Schröder reports on the utter customer satisfaction with the sturdy but precise NEUHAUS NEOTEC grinders, which he always encounters during his interventions. "This really is a well-proven design", says Schröder. The demand of the recent years has proved he is right.

# PRECISE TECHNIQUE = PERFECT AROMA

Exactly defined grinding is an indispensable prerequisite, allowing to make sure that the particle size distribution aimed at is reliably obtained. Thus the finished product has the desired features in terms of brewing, formation of foam, and aroma development in the cup. The exact optimization of the parameters can be determined on a 1:1 scale using the Neuhaus-Neotec laboratory grinder LWM. Another important factor of the coffee quality is a

minimum temperature increase, which ensures a maximum aroma conservation. Though there is only minimum product heating in the grinding section of Neuhaus Neotec grinders, a roller cooling system is available as an option. Besides the parameters corrugation and circumferential velocity, an accurate roller gap adjustment is a basic prerequisite for a constant and reliable result. For this purpose, the positioning of the moveable roller as well as

a permanent fixation of the roller in exactly this position have to be ensured. In order to avoid that the slightest functional tolerances of the adjusting mechanism may cause possible inaccuracies, all moveable parts of the mechanism are interlocked. As a result, an impressive accuracy and reproducibility of the roller position is achieved – the basis of an exact grinding in compliance with the specification.

# ALMOST EVERY DAY, NEW COFFEE SHOPS OPEN IN INDIA



## TATA INCREASES PRODUCTION AND OPTS FOR THE RFB-G BATCH ROASTER

TATA is the biggest industrial group in India with activities in shipbuilding, steelworks, car factories etc. For decades, Tata Coffee Limited has been one of the big players in the field of instant coffee with exports into almost every region of the world. In India the market for roasted & ground coffee

roasted & ground coffee. The aim is to supply a wide variety of different roasted coffee qualities which fulfil the growing demand of the coffee shops. The NEUHAUS NEOTEC RFB Batch Roaster was the first choice for Tata. Finally, they decided to buy the RFB-G Batch Roaster.



increases very fast. Almost every day, new coffee shops open in India's growing cities. As a consequence of this development Tata Coffee Ltd. has decided to raise the production of

This roaster will be supplied this year. From 2006 on, guests in coffee shops in India will be able to enjoy the high quality of Indian Coffee roasted on the RFB.



## LECTURES BY NEUHAUS NEOTEC EXPERTS DURING THE „TEA AND COFFEE WORLD CUP 2005“

### Coffee Symposium

**Monday, September 12**  
10.00 – 13.00h  
lecture No.4  
„Environmental issues: keeping plants efficient and healthy while growing profitability“  
**Dipl.-Ing. Enno von Postel**

### Cafe/Bar Service Symposium

**Monday September 12**  
10.00 – 13.00h  
lecture No.3  
„Quality control in roasting & consumer taste“  
**Dr. Jochen Wilkens**



**Dipl.-Ing. Enno von Postel**  
Process Engineer  
Construction Manager  
specialised in environmental tasks



**Dr. Jochen Wilkens**  
Ph D in Chemical Engineering  
Worked for internationally re-known companies in the coffee industry in the Research and Development Department



**Ralf Torenz**  
Chemical Engineer  
Cup tasting specialist  
Head of R & D Department  
Neuhaus Neotec  
Responsible on world wide development of coffee products

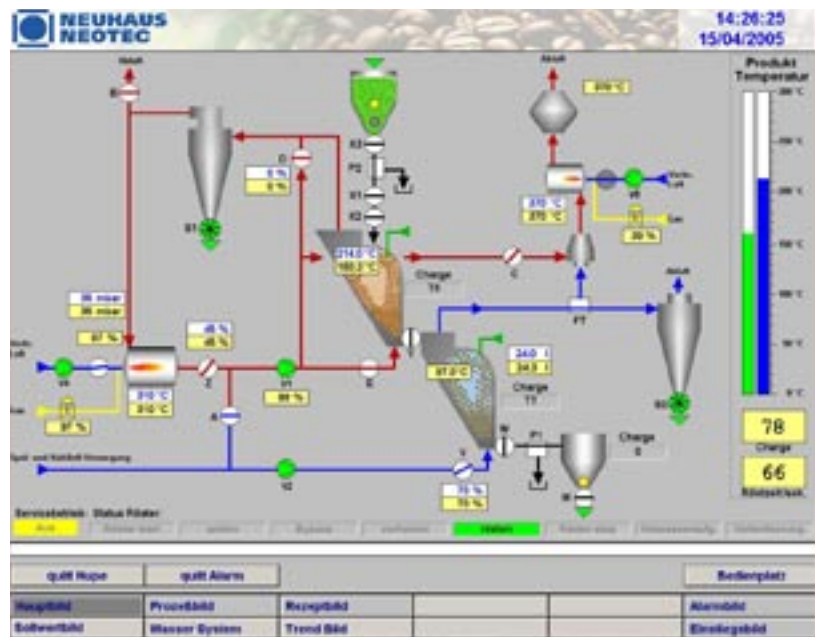
## TRADITIONAL ROASTING WITH STATE-OF-THE-ART PROCESSES

Extensive tests in the Neuhaus Neotec laboratory have proved: The coffee aroma depends on the controlled heat supply during the roasting process

Traditionally coffee roasting is looked at as a very sophisticated technique to start the formation of taste- and aroma-substances within the bean via application of heat to the green coffee. In the past a lot of successful research on all the substances representing the complexity of coffee flavor and substances their precursors have been completed.

key to coffee-flavor is the mode of heat transfer to the bean and not the construction principle of the roasting machine. This presentation will provide data on tests with systematic variations of heat transfer conditions during roasting and their effect on flavor formation. Process parameters will be proposed, which cover heat transfer conditions from high-speed roasting to traditional

## NEW ROASTING PLANT SOFTWARE FOR VIRTUAL OPERATOR TRAINING



### NEUHAUS NEOTEC present their current operator interface

Beginning of this year, Neuhaus Neotec has developed a new operator interface (HMI) for the RFB series batch roasters. This new operator interface offers besides a more detailed overview of the roasting process several features to support the roaster operators daily work. New colors and higher graphic resolution improves the screen quality and reduces fatigue when working on the screen.

Several Function keys for the roaster operation have been implemented in the new screen layouts and removed most of the hardwired push buttons. The new software supports also the service and maintenance work on the roaster providing detailed information for the mechanics. Older control systems can be upgraded with the new software

### NEUHAUS NEOTEC

Maschinen- und Anlagenbau GmbH  
Fockestraße 67  
D-27777 Ganderkesee  
phone +49 (0)4221-859-0  
fax +49 (0)4221-859-520

Dieselstraße 5-9  
D-21465 Reinbek  
phone +49 (0)40-72771-500  
fax +49 (0)40-72771-550

nnsales@neuhaus-neotec.de  
www.neuhaus-neotec.de

World agents upon request

Erroneously, the opinion that the reduction of acidity and the development of flavour can only be achieved with drum roasters is still widespread in the coffee market. We are in the position to contradict to this prejudice and to offer scientific proof, because

slow roasting within the same machine, type RFB, manufactured by Neuhaus Neotec. This enables manufacturers of roasted coffee to offer a wide variation of coffee products to meet their customers expectations.  
*Dr. Wilkens and Ralf Torenz*



Changes of design reserved NN 52 09.05 E

COFFEE IS OUR LIFE

